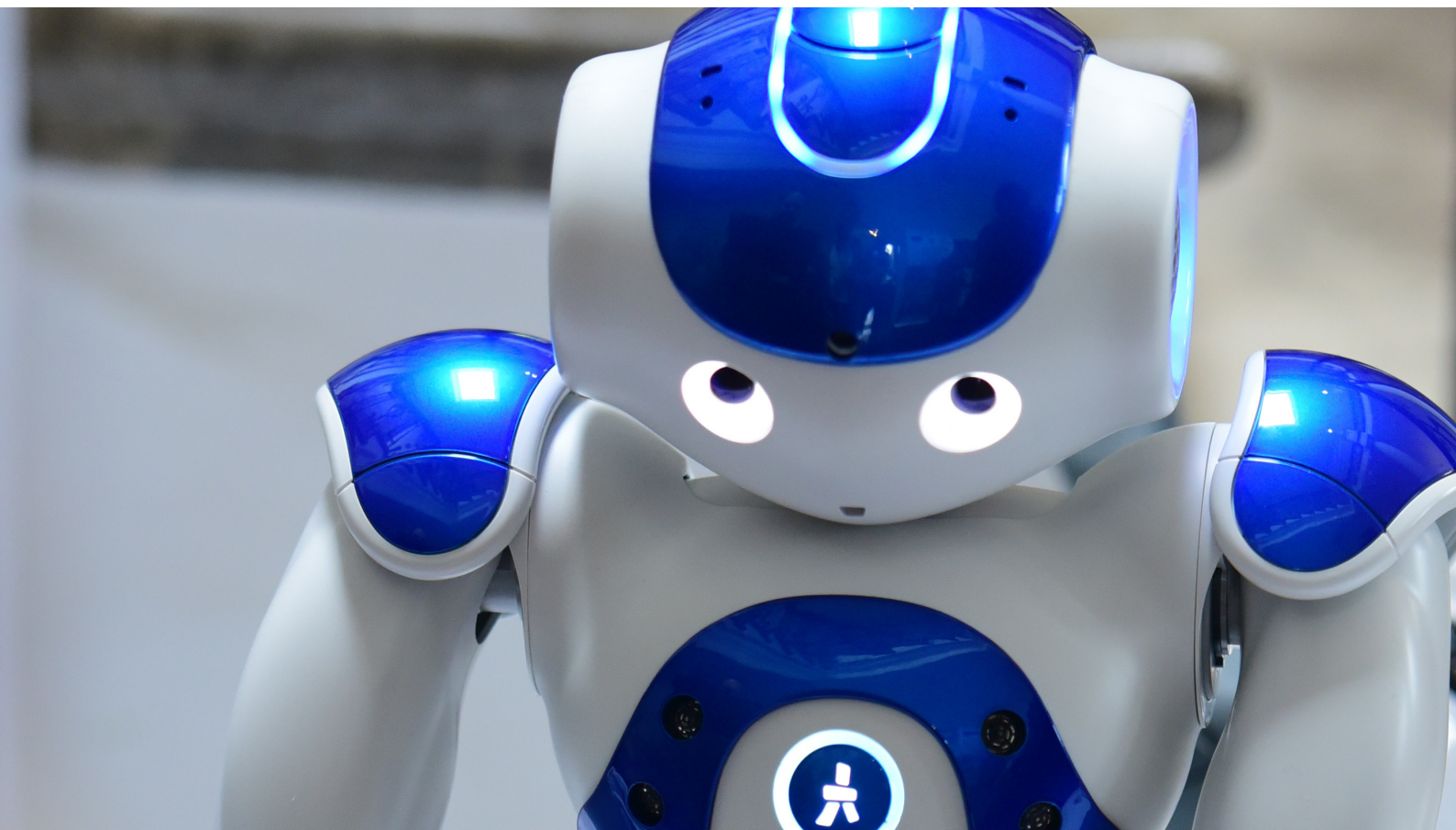


EPIC

eHealth Innovation Summit

WEDNESDAY 9TH JUNE, 2021



UNIVERSITY OF PLYMOUTH LEADING THE WAY TO INNOVATION

Delivered by Acceleration Through Innovation 2 (ATI2) and eHealth Productivity and Innovation in Cornwall (EPIC), two University of Plymouth led projects which are funded by the European Regional Development Fund, the **eHealth Innovation Summit** features some of the vibrant and globally relevant digital health and health tech solutions that are emerging from within Cornwall's thriving tech and creative sectors.

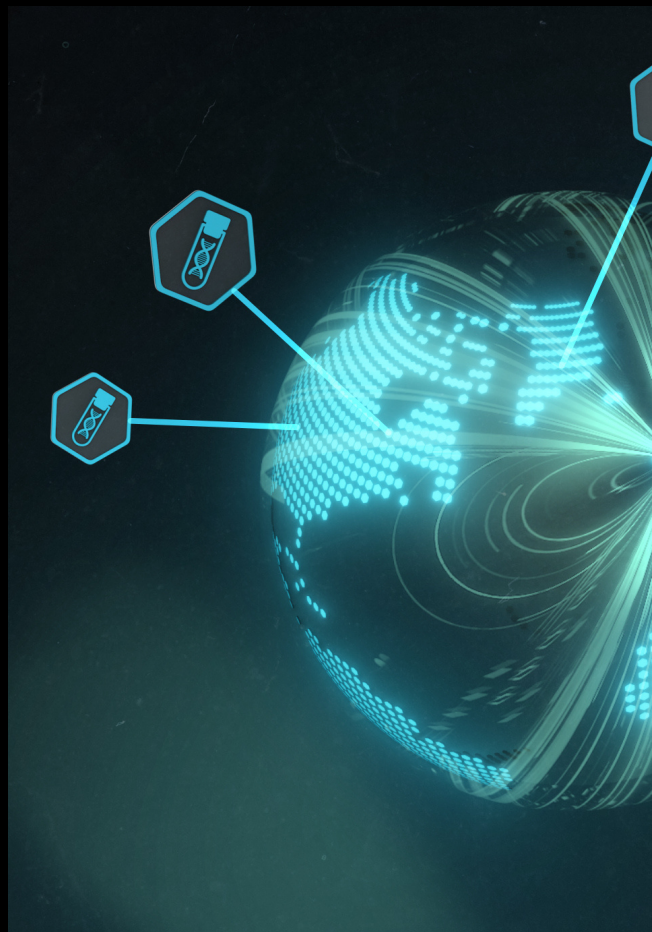
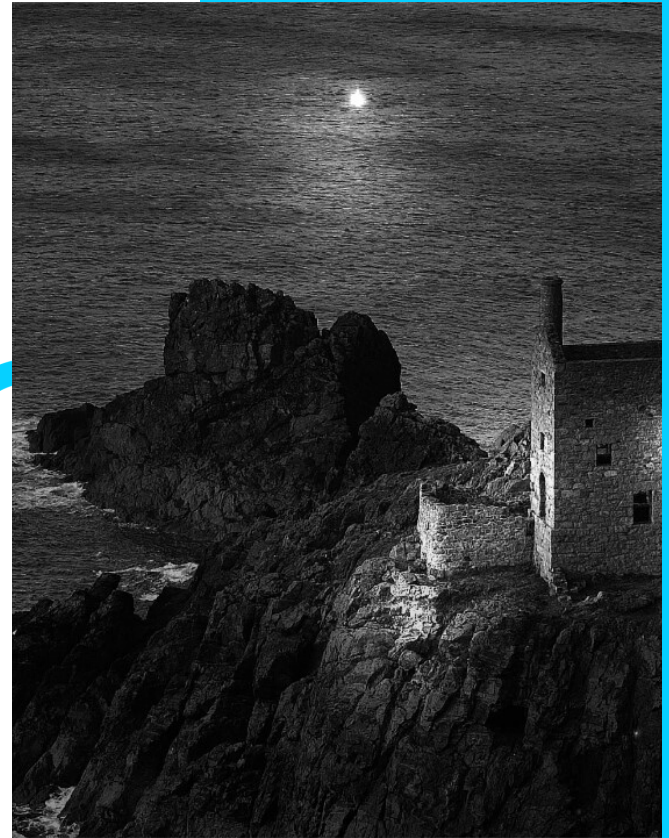
As the G7 takes place in Cornwall this year and will find world leaders discussing the global recovery from coronavirus, our panel of experts will explore how digital health solutions can strengthen resilience against future pandemics and why a collective approach to creating and using new technologies is needed when solving global problems within the health and care sector.



ACCELERATION THROUGH INNOVATION

Acceleration Through Innovation (ATI2) is a 3 year ERDF project which is designed to support business Innovation across Cornwall and the Isles of Scilly. Led by the University of Plymouth with support from Cornwall Council, ATI² supports SMEs who are seeking to commercialise new opportunities which can lead to increased growth, productivity and sustainable change.

aticornwallinnovation.co.uk



“Digital health is a real strength of the University of Plymouth and it’s this world-class knowledge and research that the businesses working with ATI2, and EPIC, really benefit from. Our programmes often work collaboratively to help those Cornish SMEs who are innovating and creating some truly life-changing digital health solutions.

The eHealth Innovation Summit will shine a light on those businesses and connect them to others in the South West, perhaps who are on similar journeys and can collaborate to solve the complex problems that the health sectors are facing.”

JO HANCOCK
ATI2 PROGRAMME MANAGER

EPIC



Led by the University of Plymouth's Centre for Health Technology, EPIC centralises the valuable input from a variety of stakeholders across the eHealth ecosystem in Cornwall and the Isles of Scilly. To strengthen the innovation network and help to help bolster sustainability, EPIC is also able to provide sector specific support for local businesses to develop new eHealth products and services. This will create jobs that will support the local economy and create truly useful innovations which will improve the quality of life and boost wellbeing for many.

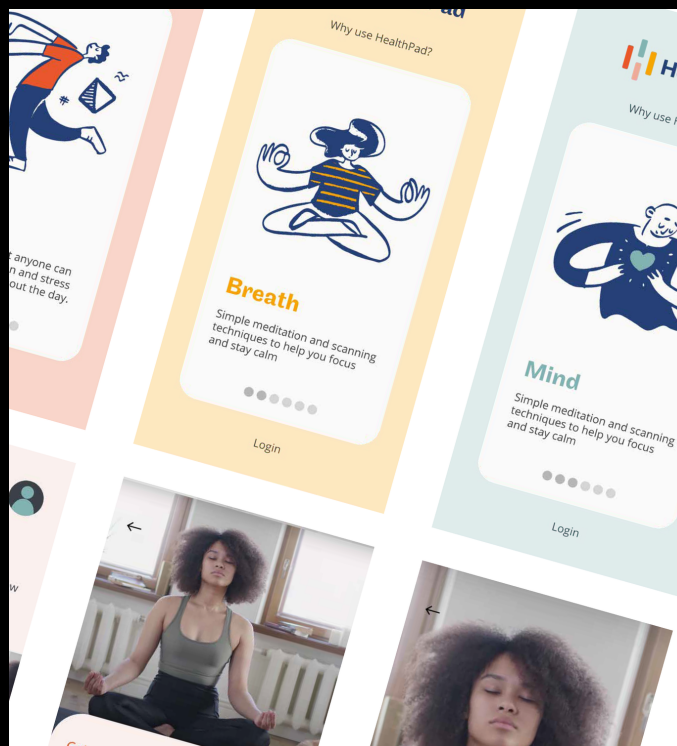
epicehealth.co.uk

"In the last 12 months the pandemic has catalysed the adoption of digital health solutions in ways that had been predicted to take many years. For any health entrepreneurs or tech businesses interested in pivoting into eHealth, now is the time to do it when people working in health and care are particularly open to addressing challenges around remote and integrated care, especially here in rural settings like Cornwall."

DR ARUNANGSU CHATERJEE
EPIC DIRECTOR



BUSINESS SHOWCASE



BUSINESS: MY HEALTH PAD

Stage of innovation: Start-Up with product launch imminent

Type of support from EPIC: Sector advice, business support and grant funding

Outline of innovation: My Health Pad provides clear, easy to follow strategies to allow you to better manage the stuff in life that we all have to deal with! Through the App they show quick ways to change your movement, your posture, your breathing and your mindset, all simple and practical techniques that you can bring into your daily life straight away. Their corporate offer supports businesses to benefit from reduced sickness, improved performance and stronger employee engagement.

Website: myhealthpad.org

Contact: hello@myhealthpad.org

"My Health Pad have been working with EPIC over the past year and the support provided has been invaluable. Helping Health Pad to draw on previous lessons learned from the sector has allowed us to grow and develop quickly. EPIC have provided a great sounding board as we try new ideas, innovate and expand."



HealthPad

BUSINESS: NEWQUAY HYPNOTHERAPY

Stage of innovation: Innovating their Wellbeing Festivals and online events. They are also looking to transition from startup to Community Interest Company, and change how their funding works, so they are doing some business process innovation too.

Type of support from ATI2: Early stage research into potential technologies to deliver the service facilitated support from private sector expertise on technologies including a working prototype. Support on preparing customer focus groups for the new service

Outline of innovation:

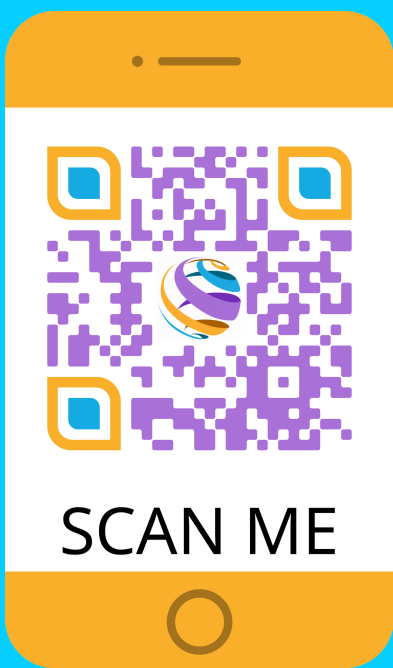
CornWELL Festivals run in-person and online events to improve wellbeing through connections and conversations, across sectors and communities. They are working with ATI2 to develop a new community-based wellbeing festival format, and to measure and evaluate the community-based social networks relating to wellbeing.

Website: www.newquayhypnotherapy.com

Contact: info@newquayhypnotherapy.com

"Working with ATI2 has opened up opportunities to develop new ideas, make new connections and access expertise in a space which is currently under-researched and under-resourced - community wellbeing."

CORNWELL
festival of wellbeing



"As a small but growing innovative business based in Cornwall, the support we have received has been invaluable. Advice, access to funding and grants, as well as contacts within a number of sectors."

BUSINESS: OCEAN 3D

Stage of innovation: Working prototype

Type of support from ATI2: Ocean 3D have been trading since 2018 and are in an expansion and development/ innovation phase.

Outline of innovation: Ocean 3D creates interactive tours using a combination of infra-red and laser scanning. In healthcare, our tours have been used to make locations more accessible and inclusive for people with hidden conditions, pre-op information to reduce anxiety, cancelled appointments and post-op pain. They have also been successfully used for hospital staff recruitment facilities management and HR functions.

Website: ocean3d.co.uk

Contact: chris@ocean3d.co.uk



Ocean 3D
INTERACTIVE 3D AND GEOSPACIAL TOURS

BUSINESS: ONCE I'VE GONE

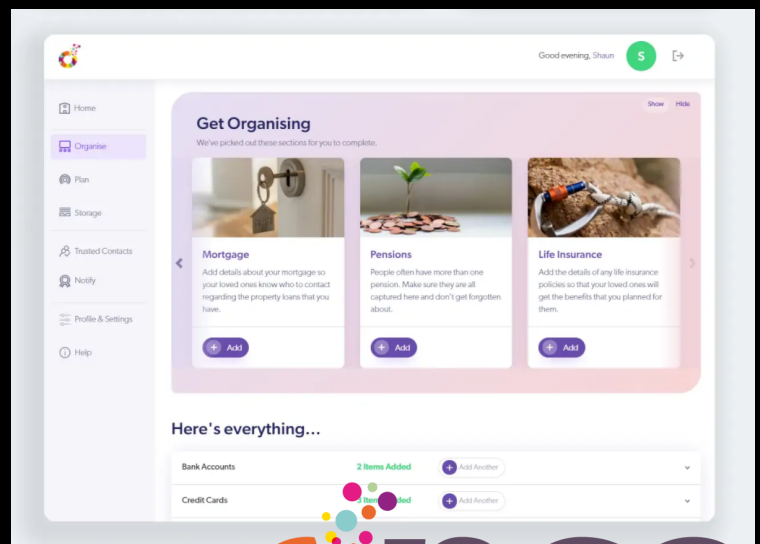
Stage of innovation: Looking for collaborations in order to grow the business

Type of support from ATI2: Grant funding, knowledge exchange and business innovation support

Outline of innovation: Once I've Gone is the online platform that stores personal, legal and financial information to help people manage their affairs and ease the administrative burden for those they leave behind in the event of their death. It also enables its users to create and manage their personal legacy, by leaving messages, videos and planning gifts for their loved ones.

Website: onceivegone.com

Contact: ian@onceivegone.com



once
i've gone

BUSINESS: PSYCHOANALYTICA

Stage of innovation: Project implementation

Type of support from EPIC: data analysis, business intelligence, ORCHA accreditation and scaling up the implementation

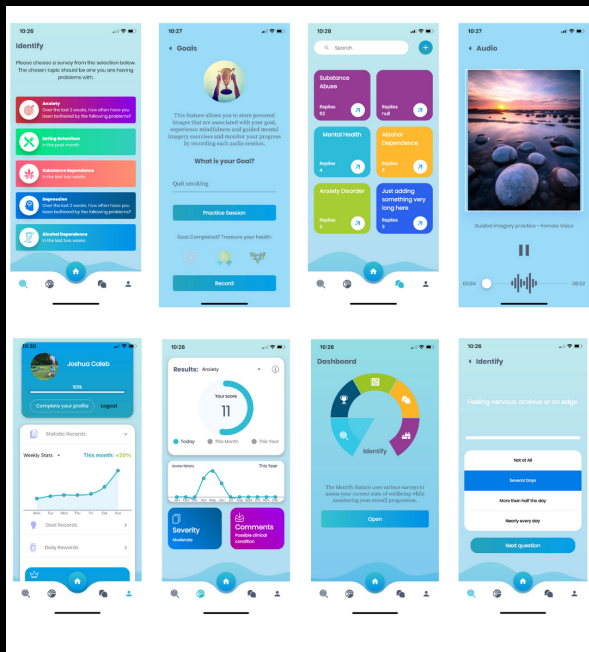
Outline of innovation:

Epilepsy affects up to 1% of the population in the UK. Research is showing that epilepsy kills 10 times more people than those with asthma. However, most people with epilepsy remain ignorant to the risks. EpSMon is the world's first evidence based mobile App for epilepsy risk monitoring. It is unique in that it has developed from a collaboration with a national charity (SUDEP Action), backed by extensive research of over 20 journal papers and focused on educating and empowering individuals with epilepsy to monitor their own risk. It has won multiple acclaimed awards including two British Medical Journal awards (2016, 2019), HSJ patient safety awards and the USA SUDEP Challenge award. Now working with Psychoanalytica (a non-commercial SME) and EPIC it has been accredited by ORCHA and endeavours to assess the data of 4000 regular users, inform clinical practice and use these vehicles to embed and implement EpSMon into routine prescribing.

Website: <https://sudep.org/epilepsy-self-monitor>

Contact: rshnkr@aol.com & rohit.shankar@nhs.net

EpSMon is a simple but groundbreaking invention designed with the patient at the centre of it. It looks to empower the patient in an evidence based manner to allow informed health and lifestyle choices which in turn will reduce premature mortality and give better quality of life.



BUSINESS: THOUGHTUNE

Stage of innovation: Minimum Viable Product

Type of support from EPIC: Feasibility Grant & Mentoring

Outline of innovation: Thoughtune is a behaviour change app that combines key psychological interventions that are transferable to a range of disorders. They monitor progress through a variety of problems using validated scales to provide accurate feedback regarding your current state of well-being. Addiction is a serious matter, so they provide fun ways of dealing with it by using gamified tools to neutralise bias, exercise goal directed behaviour and block cravings to sustain behaviour change.

Website: thoughtune.net

Contact: Info@thoughtune.net

"The EPIC team have been extremely helpful assisting me through the development of Thoughtune. They have taken the time to meet me in person and attended to any issues I have encountered with regular meetings with the relevant mentors, facilitating new connections with valuable members of the industry."



"EPIC has enabled TouchByte to better understand the care sector, leading us to develop a prototype that helps real people with real problems – that we can solve with our technology!"



touchbyte

BUSINESS: TOUCHBYTE

Stage of innovation: Working prototype

Type of support from EPIC:

Research/Funding/EPICentre – Demonstration Facility/R&D for Care at Home

Outline of innovation:

TouchByte uses biometric facial recognition technology, to allow people within a care home to access a space with their face. TouchByte's Facentry technology is contactless, enabling staff, visitors and family members smart, secure and safe access, meaning the ones we love are protected from dangerous bacteria.

Website: touchbyte.co.uk

Contact: jeremy.sneller@touchbyte.co.uk

BUSINESS: ULTRAMED

Stage of innovation: Ultramed incorporated in 2014 and developed its initial products using angel investment. This led to achieving the critical landmark of first revenue. A Crowdcube fund raise was heavily oversubscribed in 2017 providing investment funding to drive the business. Development of the business was supported by the EPIC and ATI programmes. MyPreOp was selected for the prestigious NHS Innovation Accelerator in 2020 and secured Innovate UK funding. In 2021 Ultramed was listed in the 'First 100' digital health companies run by the Department of International Trade. MyPreOp is now live in 11 major UK hospitals with regional and national level discussions about rapid adoption and spread by the NHS. A first export contract has been secured.

Type of support from EPIC/ATI2: Feasibility Grant & Mentoring

Outline of innovation: Ultramed has become a 'virtual company' and has scaled from 3 to 13 employees in the last 18 months. Ten employees live in Cornwall. MyPreOp allows patients to provide their information online and up to half of the patients avoid a preoperative assessment hospital visit. This is convenient for patients, saves nursing time and reduces travel resulting in carbon saving.

Website: ultramed.co

Contact: info@ultramed.co



Dr Paul Upton, Ultramed's co-founder and CEO said "the business support available in Cornwall was particularly valuable in the early high risk stage of developing a new company. The Innovation centres along with mentoring, network and learning opportunities provide an excellent environment for novice entrepreneurs like myself".

Ultramed®

ATI2

If you're interested in finding out more about ATI2, register your interest via: aticornwallinnovation.co.uk

The project is receiving up to £3.4 million of funding from the England European Regional Development Fund as part of the European Structural and Investment Funds Growth Programme 2014 - 2020. The Ministry of Housing, Communities and Local Government (and in London the intermediate body Greater London Authority) is the Managing Authority for European Regional Development Fund. Established by the European Union, the European Regional development Fund helps local areas stimulate their economic development by investing in projects which will support innovation, businesses, create jobs and local community regenerations. For more information, visit <https://www.gov.uk/european-growth-funding>



ATI2 and EPIC can offer SMEs based in Cornwall or the Isles of Scilly bespoke support tailored to meet the individual needs of the business and the development of an innovation. Working with University of Plymouth-led programmes enables businesses access to a wealth of groundbreaking research. We can also guide you to the programme that can offer the support that is most appropriate.

EPIC

If you're interested in finding out more about EPIC, register your interest via epicehealth.co.uk



The project is receiving up to £4 million of funding from the England European Regional Development Fund as part of the European Structural and Investment Funds Growth Programme 2014 - 2020. The Ministry of Housing, Communities and Local Government (and in London the intermediate body Greater London Authority) is the Managing Authority for European Regional Development Fund. Established by the European Union, the European Regional development Fund helps local areas stimulate their economic development by investing in projects which will support innovation, businesses, create jobs and local community regenerations. For more information, visit <https://www.gov.uk/european-growth-funding>